

XAPA

Routed slat, PET felt acoustic panels, faced with a decorative authentic concrete veneer

Technical Data Sheet

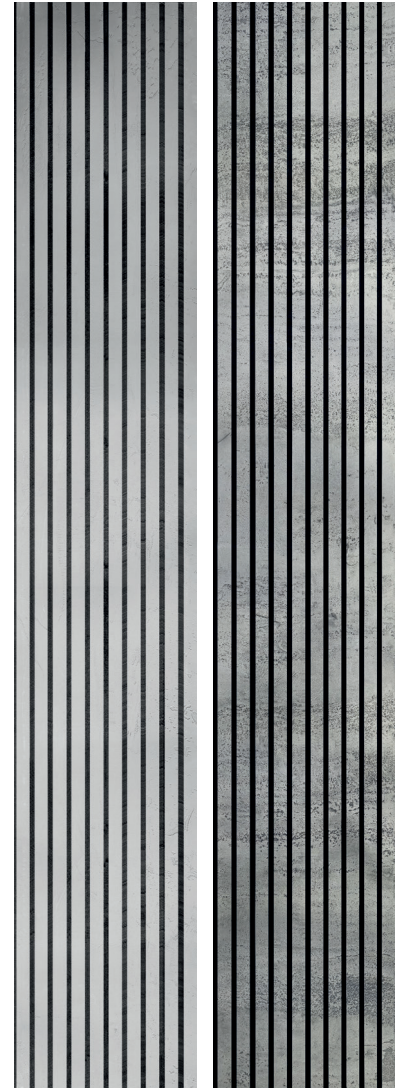
Xapa (pronounced 'shapa') is a black interior PET felt acoustic absorber with routed surface through a pre applied light weight decorative concrete veneer surface finish. Available as smooth or textured (travertine) concrete surface in a range of colours.

Panels are constructed using a PET felt backing sheet with a concrete formulation factory applied to the surface. The composite panel is then machine routed to give the decorative slat appearance.

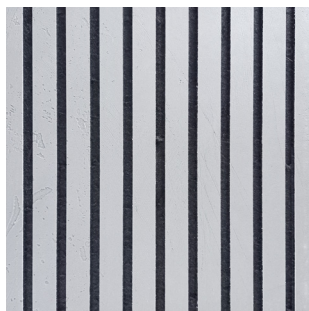
FEATURES	BENEFITS
PET backing panel	Sound absorber
Routed finish	Precise cut
Coloured Concrete veneer	Match existing colourway
Smooth or travertine finish	Surface appearance
Two standard thicknesses	Choice of acoustic performance

PHYSICAL PROPERTIES

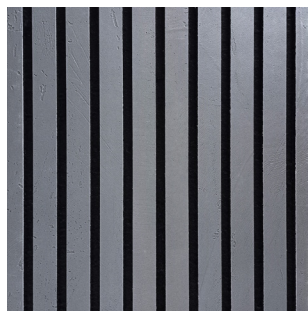
Parameter	Value		
PET colour	Black	Black	
Thickness	14 mm	26 mm	
Length	2400 mm	2400 mm	
Width	400 mm	400 mm	
PET Density	208 kg/m ²	125 kg/m ²	
Sheet weight	Smooth	3.22 kg	3.69 kg
	Travertine	3.56 kg	4.03 kg
Recycled equivalent	33 (33cl bottle)	49 (33cl bottle)	



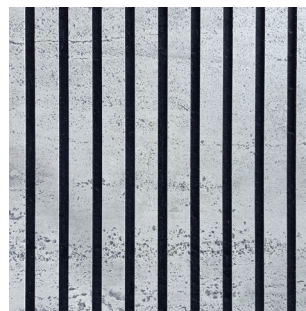
Concrete veneer available in 4 colours for both 14mm & 26mm thickness options:



Taupe



Charcoal

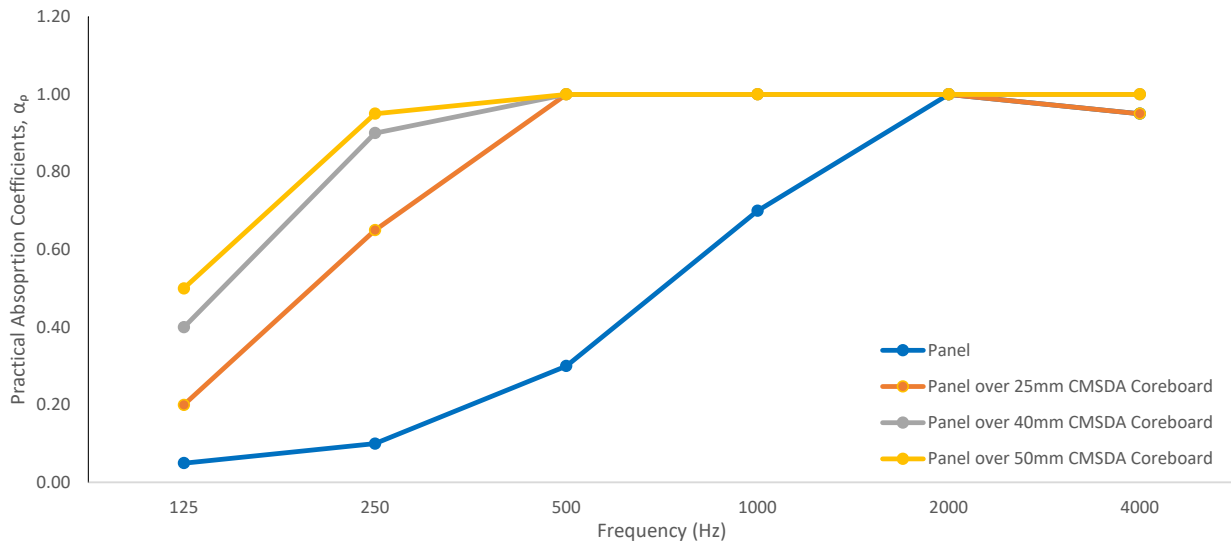


Travertine Light



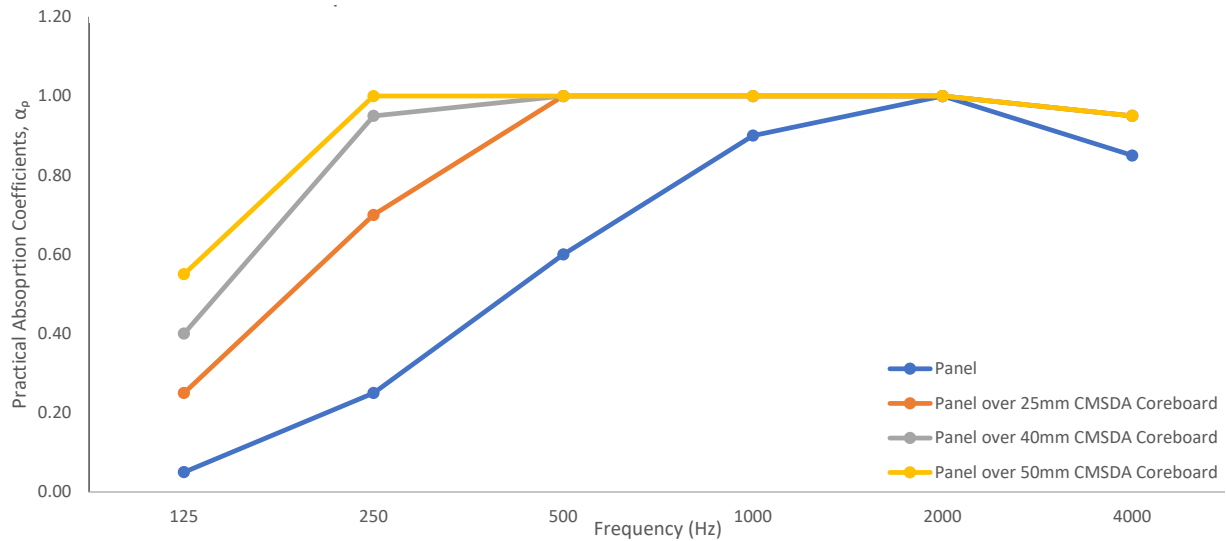
Travertine Dark

Xapa Concrete Slat Panel - 14mm overall thickness



ISO 354:2003	Frequency (Hz)						NRC	Absorp Coeff, α_w	Class
	125	250	500	1K	2K	4K			
Panel	0.05	0.10	0.30	0.70	1.00	0.95	0.50	0.35	D
Panel over 25mm CMSDA Coreboard	0.20	0.65	1.00	1.00	1.00	0.95	0.95	0.95	A
Panel over 40mm CMSDA Coreboard	0.40	0.90	1.00	1.00	1.00	1.00	1.00	1.00	A
Panel over 50mm CMSDA Coreboard	0.50	0.95	1.00	1.00	1.00	1.00	1.05	1.00	A

Xapa Concrete Slat Panel - 26mm overall thickness



ISO 354:2003	Frequency (Hz)						NRC	Absorp Coeff, α_w	Class
	125	250	500	1K	2K	4K			
Panel	0.05	0.25	0.60	0.90	1.00	0.85	0.70	0.55	D
Panel over 25mm CMSDA Coreboard	0.25	0.70	1.00	1.00	1.00	0.95	0.95	1.00	A
Panel over 40mm CMSDA Coreboard	0.40	0.95	1.00	1.00	1.00	0.95	1.10	1.00	A
Panel over 50mm CMSDA Coreboard	0.55	1.00	1.00	1.00	1.00	0.95	1.10	1.00	A

